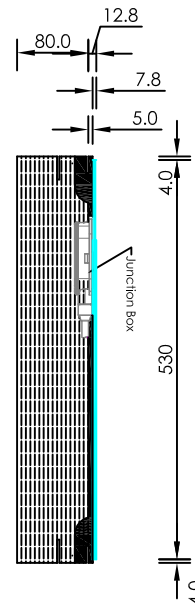




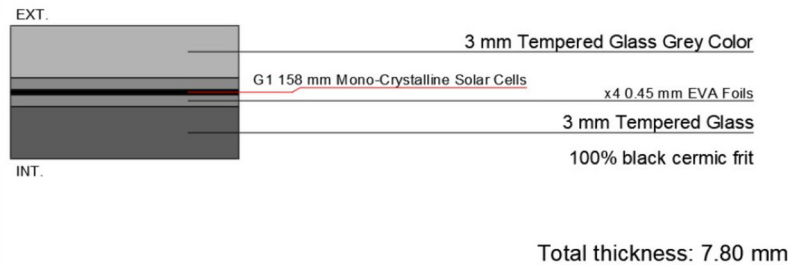
Specifiche Tecniche



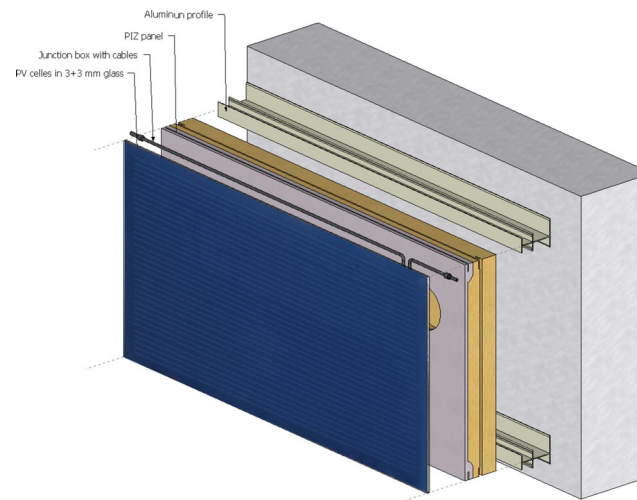
Front View



Vertical Section



PV glass configuration



3D Split View

TECHNICAL SPECIFICATIONS

Essential Characteristics	Performance	Technical Documentation Used
Reaction to fire	B-s1, d0	EN 13823
Thermal Resistance	2.11 mK/W	
Sound insulating Power	13 dB	
Wind suction Test	4000 Pa	EAD 040914-00-0404
Impact Test	Category IV	EAD 040914-00-0404

ELECTRICAL SPECIFICATIONS

Electrical Data test conditions	
Nominal peak power	85 Wp
Open-circuit voltage	14 V
Short-circuit current	7.72 A
Voltage at nominal peak power	11 V
Current at nominal power	7.46 A
Power tolerance not to exceed	± 10%
Junction Box	
Protection	IP 65
Wiring Section	2.5 mm ² or 4.0 mm ²
Limits	
Maximum system voltage	1000 V
Operating module temperature	-40...+85 °C
Temperature Coefficients	
Temperature coefficient of P _{mp}	-0.32 %/°C
Temperature coefficient of V _{oc}	-0.28 %/°C
Temperature coefficient of I _{sc}	+0.07 %/°C
Glass Properties	
Light transmission	0 %
UV-value	-
Peak power	133 Wp/sqm
Cell Type	
G1 158 mm Mono Crystalline solar cell (5BB)	

* these data depend on the customization of the product (size, colours and nominal peak power)

Dimensions and Color

Length	1200 mm
Width	530 mm
Height	92 mm
Color	Grey



Document Title: Data Sheet E-PIZ colored glass
 Document No: DataSheet_ePIZ_V1
 Project Name:
 Product Name: e-PIZ colored glass

ALL RIGHTS RESERVED. NO PART OF THIS DRAWING MAY BE REPRODUCED OR TRANSMITTED IN ANY FORMS BY ANY MEANS WITHOUT WRITTEN PERMISSION OF THE COPYRIGHT HOLDER.

PIZ srl via dei Molini 22, 23013 Cosio Valtellino (SO) ITALY T +39 0342 60.60.60 F +39 0342 60.60.40 / www.piz.it piz@zecca.com

PIZ
cladding systems