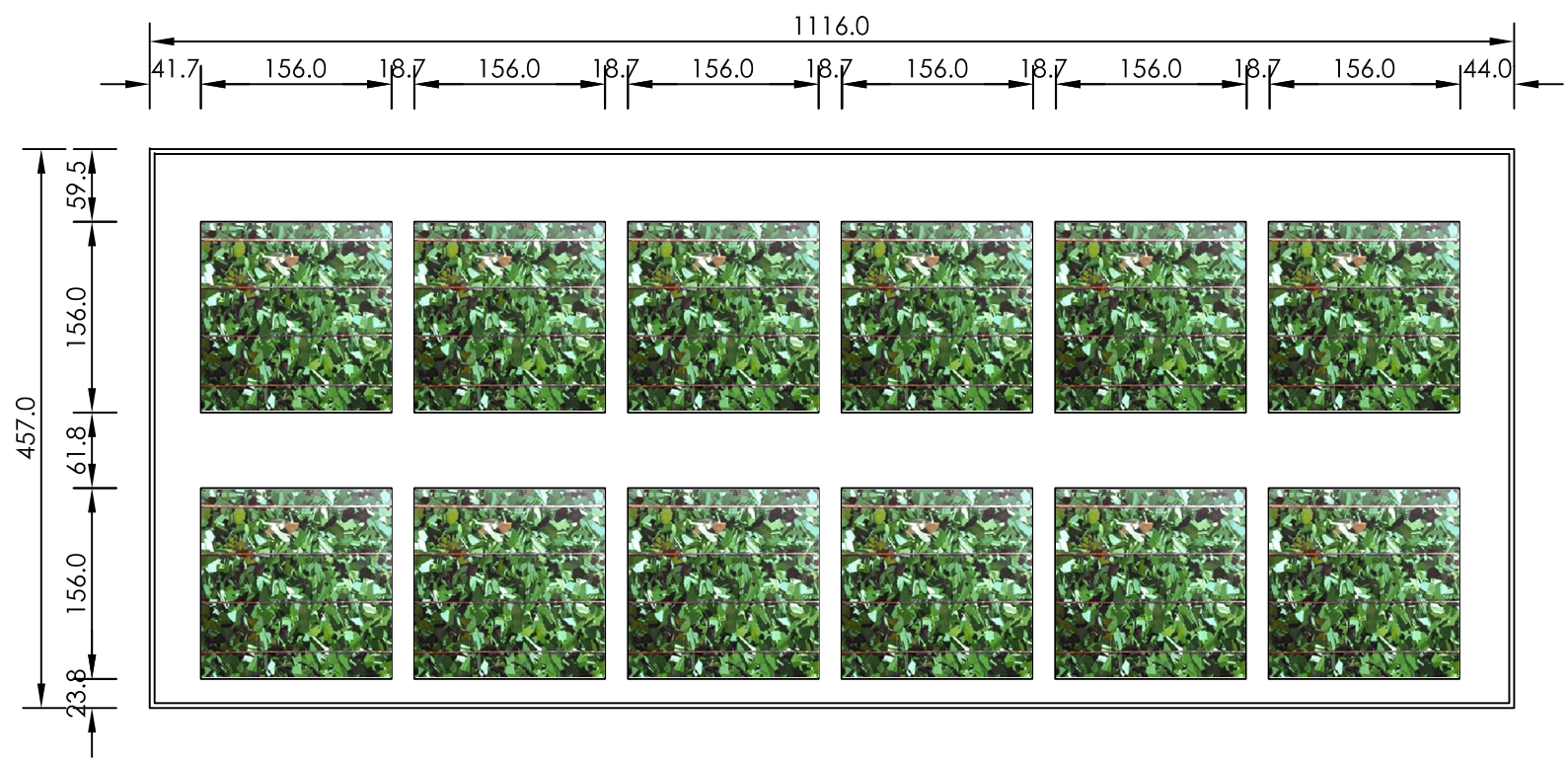
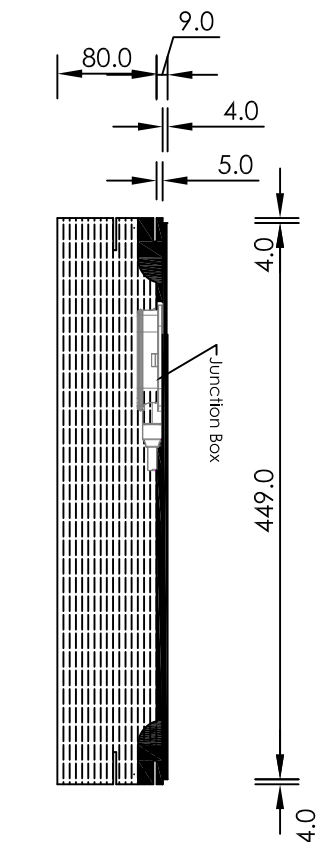




Specifiche Tecniche

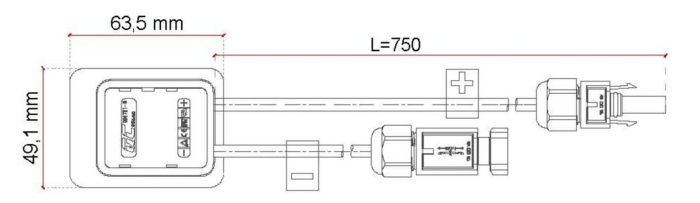


Front View

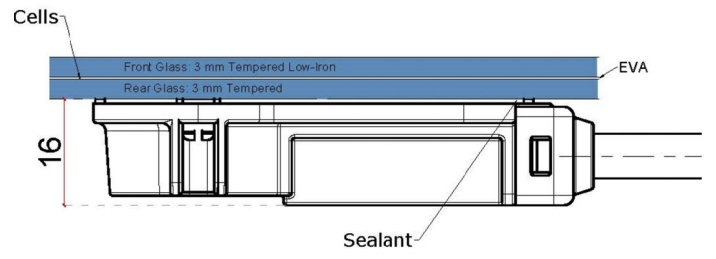


Vertical Section

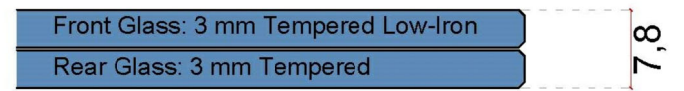
DETAIL: Junction Box



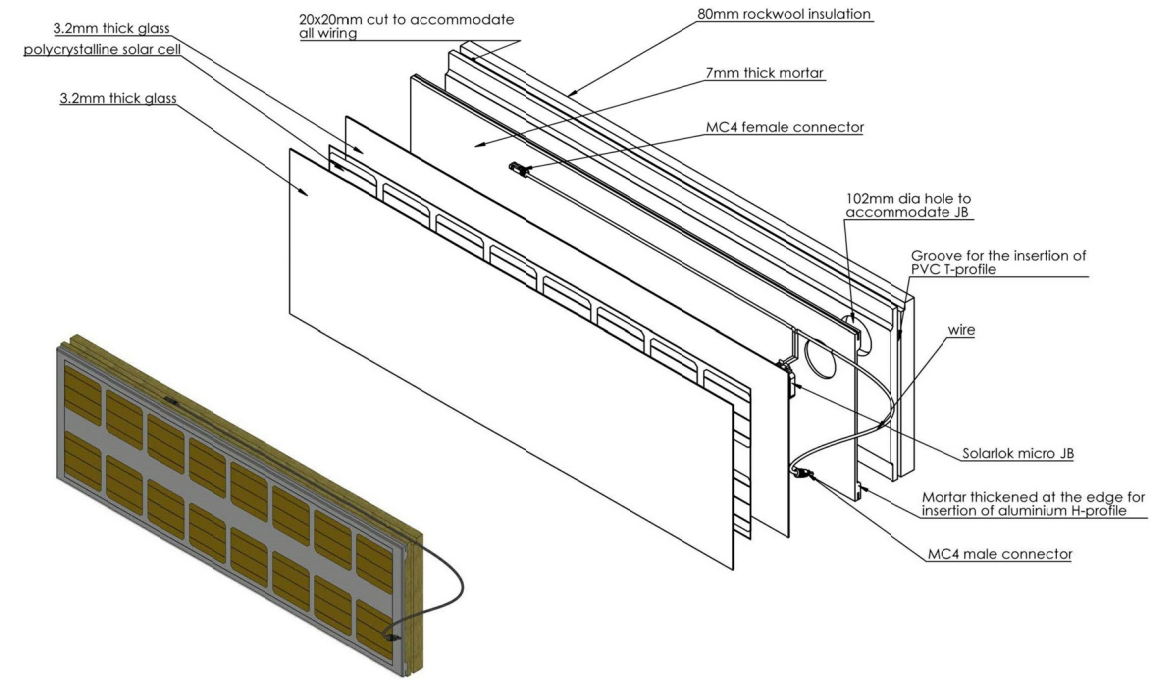
DETAIL 2: Junction box location



DETAIL 1: Glass configuration



Section at JB Level



3D Split View

TECHNICAL SPECIFICATIONS

Essential Characteristics	Performance	Technical Documentation Used
Reaction to fire	B-s1, d0	EN 13823
Thermal Resistance	2,11 m ² K/W	
Sound insulating Power	13 dB	
Wind suction Test	4000 Pa	EAD 040914-00-0404
Impact Test	Category IV	EAD 040914-00-0404

ELECTRICAL SPECIFICATIONS

Electrical Data test conditions

Nominal peak power	47 Wp
Open-circuit voltage	7 V
Short-circuit current	8,22 A
Voltage at nominal peak power	6 V
Current at nominal power	7,68 A
Power tolerance not to exceed	± 10%

Junction Box

Protection	IP 65
Wiring Section	2.5 mm ² or 4.0 mm ²

Limits

Maximum system voltage	1000 V
Operating module temperature	-40...+85 °C

Temperature Coefficients

Temperature coefficient of P _{mp}	-0,451 %/°C
Temperature coefficient of V _{oc}	-0,361 %/°C
Temperature coefficient of I _{sc}	+0,08 %/°C

Glass Properties

Light transmission	42 %
UV-value	-
Peak power	93,7 Wp/sqm

Cell Type

6" Poly Color Crystalline sparkling gold (5BB)

* these data depend on the customization of the product (size, colours and nominal peak power)

Dimensions and Color

Length	1116 mm
Width	457 mm
Height	89mm
Color	White



Document Title: Data Sheet E-PIZ
 Document No: DataSheet_ePIZ_V1
 Project Name: BIPVBOOST
 Product Name: e-PIZ

ALL RIGHTS RESERVED. NO PART OF THIS DRAWING MAY BE REPRODUCED OR TRANSMITTED IN ANY FORMS BY ANY MEANS WITHOUT WRITTEN PERMISSION OF THE COPYRIGHT HOLDER.

PIZ srl via dei Molini 22, 23013 Cosio Valtellino (SO) ITALY T +39 0342 60.60.60 F +39 0342 60.60.40 / www.piz.it piz@zecca.com

PIZ
cladding systems